

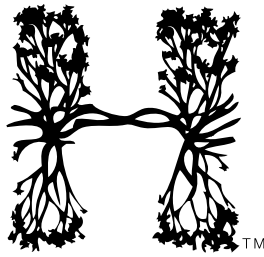
HYDE RESORT & RESIDENCES  
HOLLYWOOD FLORIDA



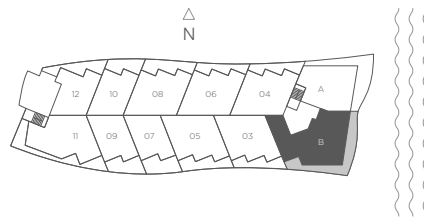
**COMBO UNIT 4 BEDROOMS 4.5 BATHS**

Interior 3,290 sq ft / 305.65 m<sup>2</sup> Terraces 1,130 sq ft / 104.98 m<sup>2</sup> Total 4,420 sq ft / 410.63 m<sup>2</sup>

Stated dimensions are measured to the exterior boundaries of the exterior walls and the centerline of interior demising walls and in fact vary from the dimensions that would be determined by using the description and definition of the "Unit" set forth in the Declaration which generally only includes the interior airspace between the perimeter walls (measuring from interior wall plane to interior wall plane) and excludes interior structural components. For your reference, the square footage area of the Unit, determined in accordance with those Unit boundaries as defined in the Declaration (from interior wall plane to interior wall plane), is 2,935 sq.ft. Note that measurements of rooms set forth on this floor plan are generally taken at the greatest points of each given room (as if the room were a perfect rectangle), without regard for any cutouts. Accordingly, the area of the actual room will typically be smaller than the product obtained by multiplying the stated length times width. All dimensions are approximate and may vary with actual construction. All floor plans and development plans are subject to change without notice. The furnishings and décor depicted is not necessarily included with the purchase of your Unit and is shown for purposes of illustration only. Consult your prospectus and Purchase Agreement to determine what is included with your Unit purchase, if anything.



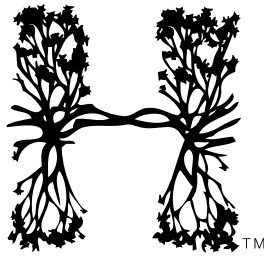
HYDE RESORT & RESIDENCES  
HOLLYWOOD FLORIDA



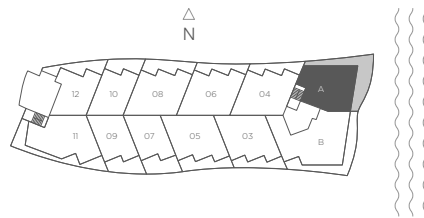
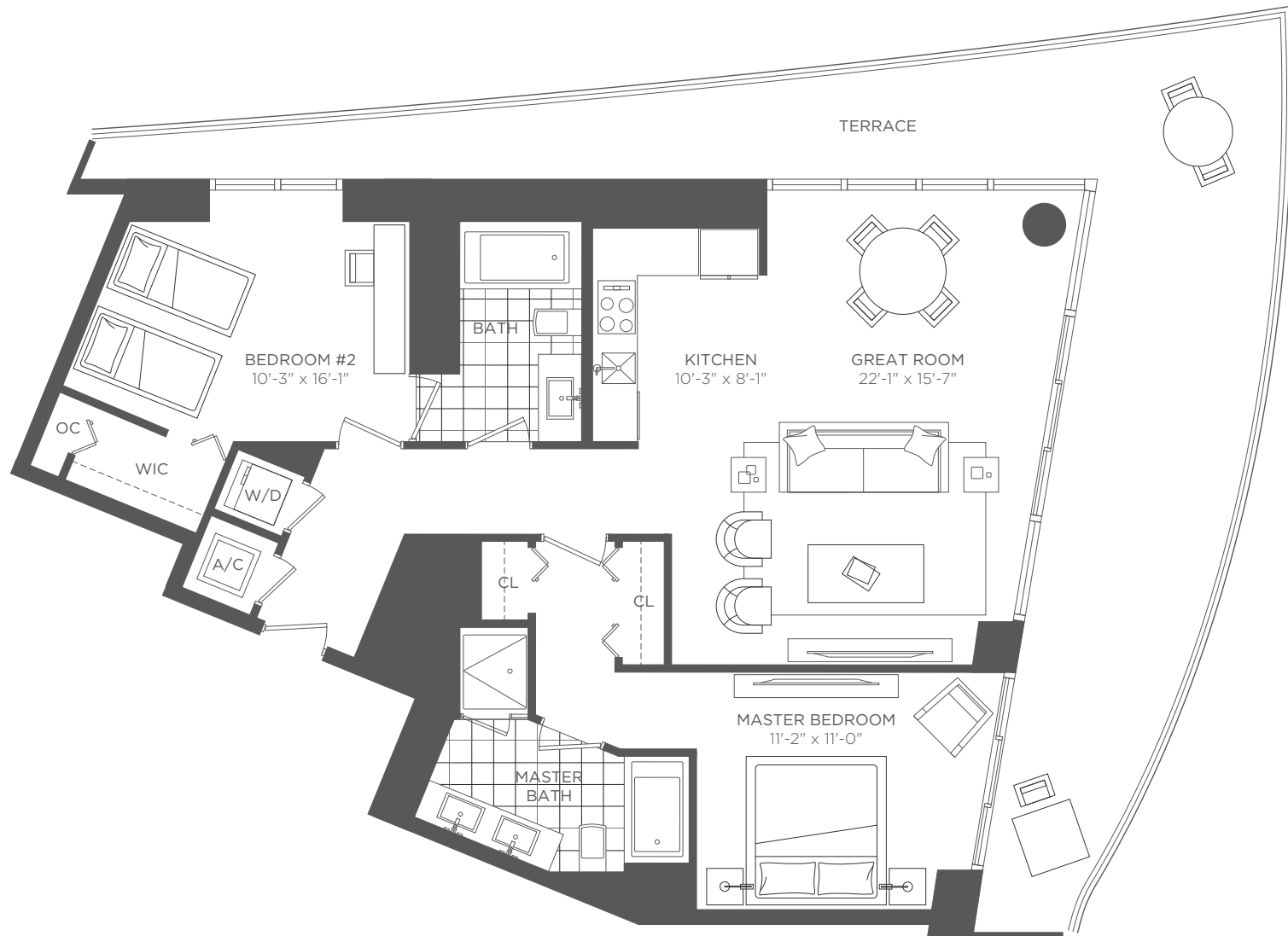
### RESIDENCE B 3 BEDROOMS 3 BATHS

Interior 1,917 sq ft / 178.10 m<sup>2</sup> Terraces 634 sq ft / 58.90 m<sup>2</sup> Total 2,551 sq ft / 237 m<sup>2</sup>

Stated dimensions are measured to the exterior boundaries of the exterior walls and the centerline of interior demising walls and in fact vary from the dimensions that would be determined by using the description and definition of the "Unit" set forth in the Declaration which generally only includes the interior airspace between the perimeter walls (measuring from interior wall plane to interior wall plane) and excludes interior structural components. For your reference, the square footage area of the Unit, determined in accordance with those Unit boundaries as defined in the Declaration (from interior wall plane to interior wall plane), is 1,771 sq.ft. Note that measurements of rooms set forth on this floor plan are generally taken at the greatest points of each given room (as if the room were a perfect rectangle), without regard for any cutouts. Accordingly, the area of the actual room will typically be smaller than the product obtained by multiplying the stated length times width. All dimensions are approximate and may vary with actual construction. All floor plans and development plans are subject to change without notice. The furnishings and décor depicted is not necessarily included with the purchase of your Unit and is shown for purposes of illustration only. Consult your prospectus and Purchase Agreement to determine what is included with your Unit purchase, if anything.



HYDE RESORT & RESIDENCES  
HOLLYWOOD FLORIDA

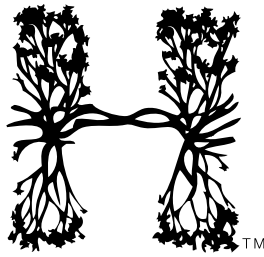


## RESIDENCE A 2 BEDROOMS 2 BATHS

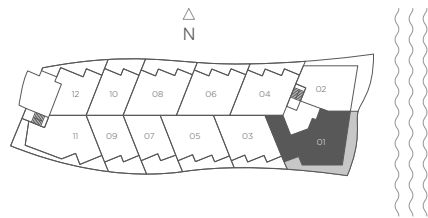
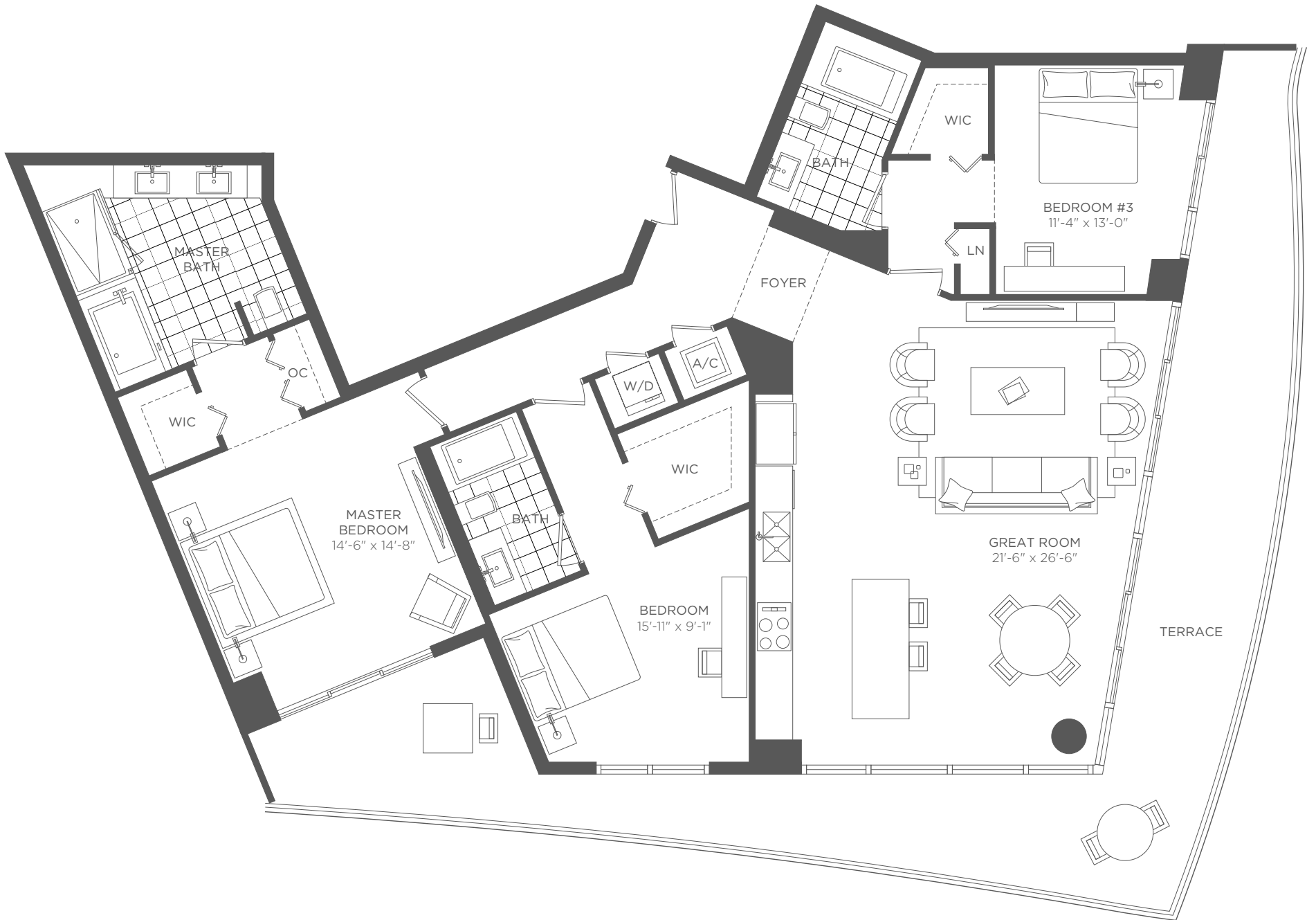
Interior 1,310 sq ft / 121.70 m<sup>2</sup> Terraces 600 sq ft / 55.74 m<sup>2</sup> Total 1,910 sq ft / 177.44 m<sup>2</sup>



Stated dimensions are measured to the exterior boundaries of the exterior walls and the centerline of interior demising walls and in fact vary from the dimensions that would be determined by using the description and definition of the "Unit" set forth in the Declaration which generally only includes the interior airspace between the perimeter walls (measuring from interior wall plane to interior wall plane) and excludes interior structural components. For your reference, the square footage area of the Unit, determined in accordance with those Unit boundaries as defined in the Declaration (from interior wall plane to interior wall plane), is 1,164 sq.ft. Note that measurements of rooms set forth on this floor plan are generally taken at the greatest points of each given room (as if the room were a perfect rectangle), without regard for any cutouts. Accordingly, the area of the actual room will typically be smaller than the product obtained by multiplying the stated length times width. All dimensions are approximate and may vary with actual construction. All floor plans and development plans are subject to change without notice. The furnishings and décor depicted is not necessarily included with the purchase of your Unit and is shown for purposes of illustration only. Consult your prospectus and Purchase Agreement to determine what is included with your Unit purchase, if anything.




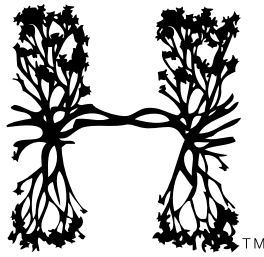
HYDE RESORT & RESIDENCES  
HOLLYWOOD FLORIDA



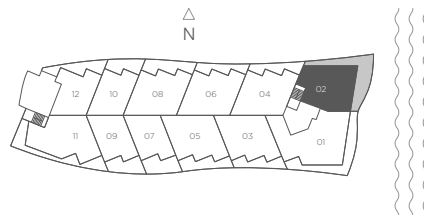
### RESIDENCE 01 3 BEDROOMS 3 BATHS

Interior 1,917 sq ft / 178.10 m<sup>2</sup> Terraces 634 sq ft / 58.90 m<sup>2</sup> Total 2,551 sq ft / 237 m<sup>2</sup>

 Stated dimensions are measured to the exterior boundaries of the exterior walls and the centerline of interior demising walls and in fact vary from the dimensions that would be determined by using the description and definition of the "Unit" set forth in the Declaration which generally only includes the interior airspace between the perimeter walls (measuring from interior wall plane to interior wall plane) and excludes interior structural components. For your reference, the square footage area of the Unit, determined in accordance with those Unit boundaries as defined in the Declaration (from interior wall plane to interior wall plane), is 1,771 sq.ft. Note that measurements of rooms set forth on this floor plan are generally taken at the greatest points of each given room (as if the room were a perfect rectangle), without regard for any cutouts. Accordingly, the area of the actual room will typically be smaller than the product obtained by multiplying the stated length times width. All dimensions are approximate and may vary with actual construction. All floor plans and development plans are subject to change without notice. The furnishings and décor depicted is not necessarily included with the purchase of your Unit and is shown for purposes of illustration only. Consult your prospectus and Purchase Agreement to determine what is included with your Unit purchase, if anything.



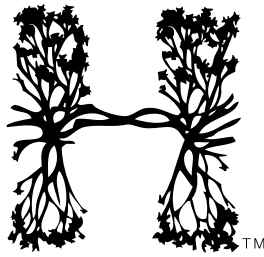
HYDE RESORT & RESIDENCES  
HOLLYWOOD FLORIDA



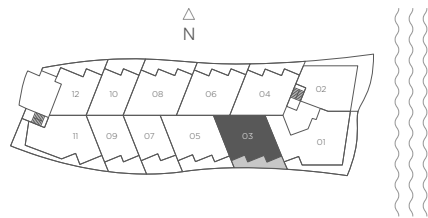
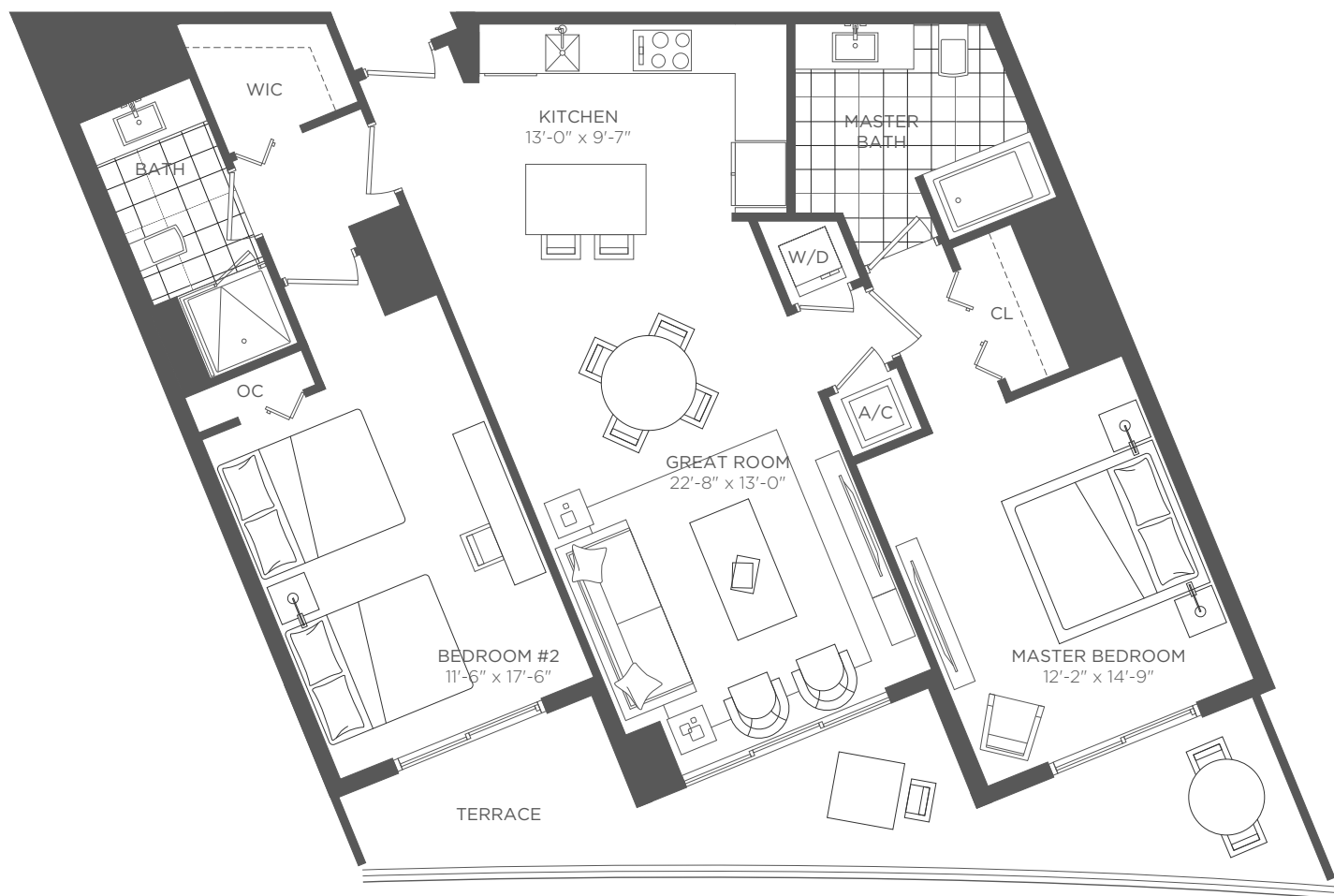
## RESIDENCE 02 2 BEDROOMS 2 BATHS

Interior 1,310 sq ft / 121.70 m<sup>2</sup> Terraces 600 sq ft / 55.74 m<sup>2</sup> Total 1,910 sq ft / 177.44 m<sup>2</sup>

Stated dimensions are measured to the exterior boundaries of the exterior walls and the centerline of interior demising walls and in fact vary from the dimensions that would be determined by using the description and definition of the "Unit" set forth in the Declaration which generally only includes the interior airspace between the perimeter walls (measuring from interior wall plane to interior wall plane) and excludes interior structural components. For your reference, the square footage area of the Unit, determined in accordance with those Unit boundaries as defined in the Declaration (from interior wall plane to interior wall plane), is 1,164 sq.ft. Note that measurements of rooms set forth on this floor plan are generally taken at the greatest points of each given room (as if the room were a perfect rectangle), without regard for any cutouts. Accordingly, the area of the actual room will typically be smaller than the product obtained by multiplying the stated length times width. All dimensions are approximate and may vary with actual construction. All floor plans and development plans are subject to change without notice. The furnishings and décor depicted is not necessarily included with the purchase of your Unit and is shown for purposes of illustration only. Consult your prospectus and Purchase Agreement to determine what is included with your Unit purchase, if anything.



HYDE RESORT & RESIDENCES  
HOLLYWOOD FLORIDA

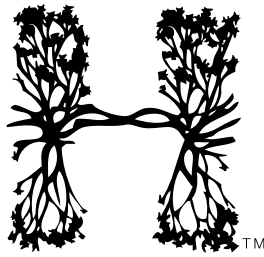


### RESIDENCE 03 2 BEDROOMS 2 BATHS

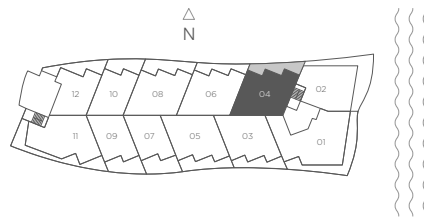
Interior 1,235 sq ft / 114.73 m<sup>2</sup> Terraces 232 sq ft / 21.55 m<sup>2</sup> Total 1,467 sq ft / 136.29 m<sup>2</sup>



Stated dimensions are measured to the exterior boundaries of the exterior walls and the centerline of interior demising walls and in fact vary from the dimensions that would be determined by using the description and definition of the "Unit" set forth in the Declaration which generally only includes the interior airspace between the perimeter walls (measuring from interior wall plane to interior wall plane) and excludes interior structural components. For your reference, the square footage area of the Unit, determined in accordance with those Unit boundaries as defined in the Declaration (from interior wall plane to interior wall plane), is 1,136 sq.ft. Note that measurements of rooms set forth on this floor plan are generally taken at the greatest points of each given room (as if the room were a perfect rectangle), without regard for any cutouts. Accordingly, the area of the actual room will typically be smaller than the product obtained by multiplying the stated length times width. All dimensions are approximate and may vary with actual construction. All floor plans and development plans are subject to change without notice. The furnishings and décor depicted is not necessarily included with the purchase of your Unit and is shown for purposes of illustration only. Consult your prospectus and Purchase Agreement to determine what is included with your Unit purchase, if anything.



HYDE RESORT & RESIDENCES  
HOLLYWOOD FLORIDA

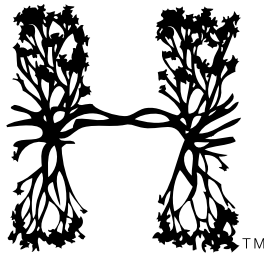


## RESIDENCE 04 2 BEDROOMS 2 BATHS

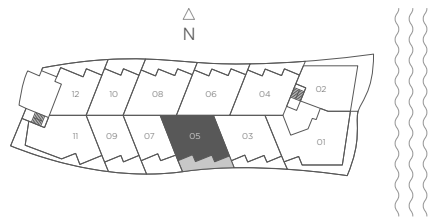
Interior 1,248 sq ft / 115.94 m<sup>2</sup> Terraces 277 sq ft / 25.73 m<sup>2</sup> Total 1,525 sq ft / 141.67 m<sup>2</sup>



Stated dimensions are measured to the exterior boundaries of the exterior walls and the centerline of interior demising walls and in fact vary from the dimensions that would be determined by using the description and definition of the "Unit" set forth in the Declaration which generally only includes the interior airspace between the perimeter walls (measuring from interior wall plane to interior wall plane) and excludes interior structural components. For your reference, the square footage area of the Unit, determined in accordance with those Unit boundaries as defined in the Declaration (from interior wall plane to interior wall plane), is 1,126 sq.ft. Note that measurements of rooms set forth on this floor plan are generally taken at the greatest points of each given room (as if the room were a perfect rectangle), without regard for any cutouts. Accordingly, the area of the actual room will typically be smaller than the product obtained by multiplying the stated length times width. All dimensions are approximate and may vary with actual construction. All floor plans and development plans are subject to change without notice. The furnishings and décor depicted is not necessarily included with the purchase of your Unit and is shown for purposes of illustration only. Consult your prospectus and Purchase Agreement to determine what is included with your Unit purchase, if anything.



HYDE RESORT & RESIDENCES  
HOLLYWOOD FLORIDA



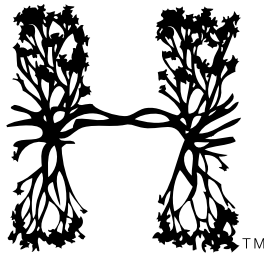
## RESIDENCE 05 2 BEDROOMS 2 BATHS

Interior 1,265 sq ft / 117.52 m<sup>2</sup> Terraces 288 sq ft / 26.76 m<sup>2</sup> Total 1,553 sq ft / 144.28 m<sup>2</sup>

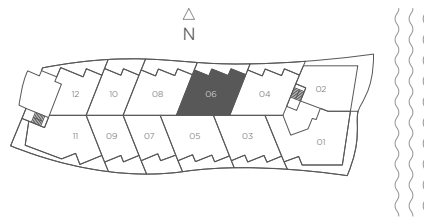


Stated dimensions are measured to the exterior boundaries of the exterior walls and the centerline of interior demising walls and in fact vary from the dimensions that would be determined by using the description and definition of the "Unit" set forth in the Declaration which generally only includes the interior airspace between the perimeter walls (measuring from interior wall plane to interior wall plane) and excludes interior structural components. For your reference, the square footage area of the Unit, determined in accordance with those Unit boundaries as defined in the Declaration (from interior wall plane to interior wall plane), is 1,161 sq.ft. Note that measurements of rooms set forth on this floor plan are generally taken at the greatest points of each given room (as if the room were a perfect rectangle), without regard for any cutouts. Accordingly, the area of the actual room will typically be smaller than the product obtained by multiplying the stated length times width. All dimensions are approximate and may vary with actual construction. All floor plans and development plans are subject to change without notice. The furnishings and décor depicted is not necessarily included with the purchase of your Unit and is shown for purposes of illustration only. Consult your prospectus and Purchase Agreement to determine what is included with your Unit purchase, if anything.






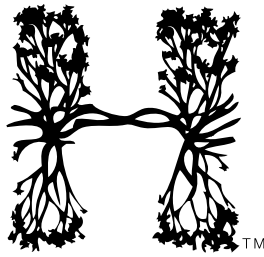
HYDE RESORT & RESIDENCES  
HOLLYWOOD FLORIDA



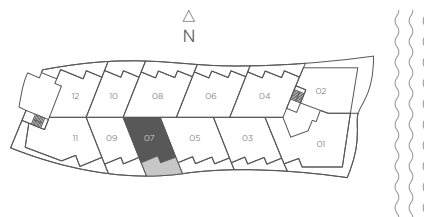
## RESIDENCE 06 2 BEDROOMS 2 BATHS

Interior 1,235 sq ft / 114.74 m<sup>2</sup> Terraces 265 sq ft / 24.62 m<sup>2</sup> Total 1,500 sq ft / 139.35 m<sup>2</sup>

 Stated dimensions are measured to the exterior boundaries of the exterior walls and the centerline of interior demising walls and in fact vary from the dimensions that would be determined by using the description and definition of the "Unit" set forth in the Declaration which generally only includes the interior airspace between the perimeter walls (measuring from interior wall plane to interior wall plane) and excludes interior structural components. For your reference, the square footage area of the Unit, determined in accordance with those Unit boundaries as defined in the Declaration (from interior wall plane to interior wall plane), is 1,129 sq.ft. Note that measurements of rooms set forth on this floor plan are generally taken at the greatest points of each given room (as if the room were a perfect rectangle), without regard for any cutouts. Accordingly, the area of the actual room will typically be smaller than the product obtained by multiplying the stated length times width. All dimensions are approximate and may vary with actual construction. All floor plans and development plans are subject to change without notice. The furnishings and décor depicted is not necessarily included with the purchase of your Unit and is shown for purposes of illustration only. Consult your prospectus and Purchase Agreement to determine what is included with your Unit purchase, if anything.




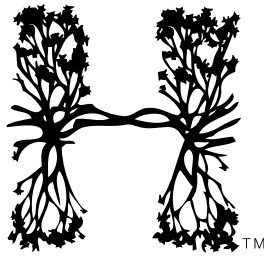
HYDE RESORT & RESIDENCES  
HOLLYWOOD FLORIDA



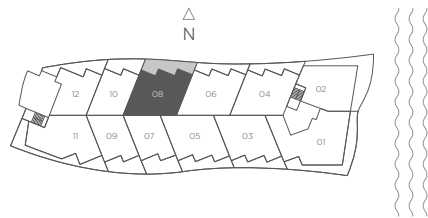
### RESIDENCE 07 1 BEDROOM 1 BATH

Interior 914 sq ft / 84.91 m<sup>2</sup> Terraces 213 sq ft / 19.78 m<sup>2</sup> Total 1,127 sq ft / 104.70 m<sup>2</sup>

 Stated dimensions are measured to the exterior boundaries of the exterior walls and the centerline of interior demising walls and in fact vary from the dimensions that would be determined by using the description and definition of the "Unit" set forth in the Declaration which generally only includes the interior airspace between the perimeter walls (measuring from interior wall plane to interior wall plane) and excludes interior structural components. For your reference, the square footage area of the Unit, determined in accordance with those Unit boundaries as defined in the Declaration (from interior wall plane to interior wall plane), is 852 sq.ft. Note that measurements of rooms set forth on this floor plan are generally taken at the greatest points of each given room (as if the room were a perfect rectangle), without regard for any cutouts. Accordingly, the area of the actual room will typically be smaller than the product obtained by multiplying the stated length times width. All dimensions are approximate and may vary with actual construction. All floor plans and development plans are subject to change without notice. The furnishings and décor depicted is not necessarily included with the purchase of your Unit and is shown for purposes of illustration only. Consult your prospectus and Purchase Agreement to determine what is included with your Unit purchase, if anything.




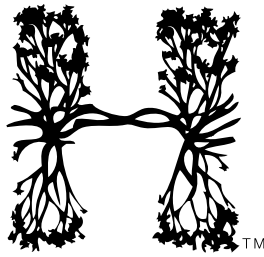
HYDE RESORT & RESIDENCES  
HOLLYWOOD FLORIDA



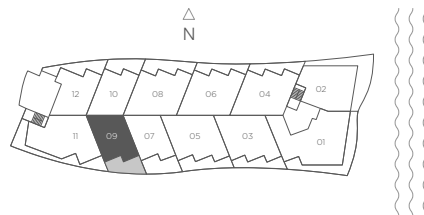
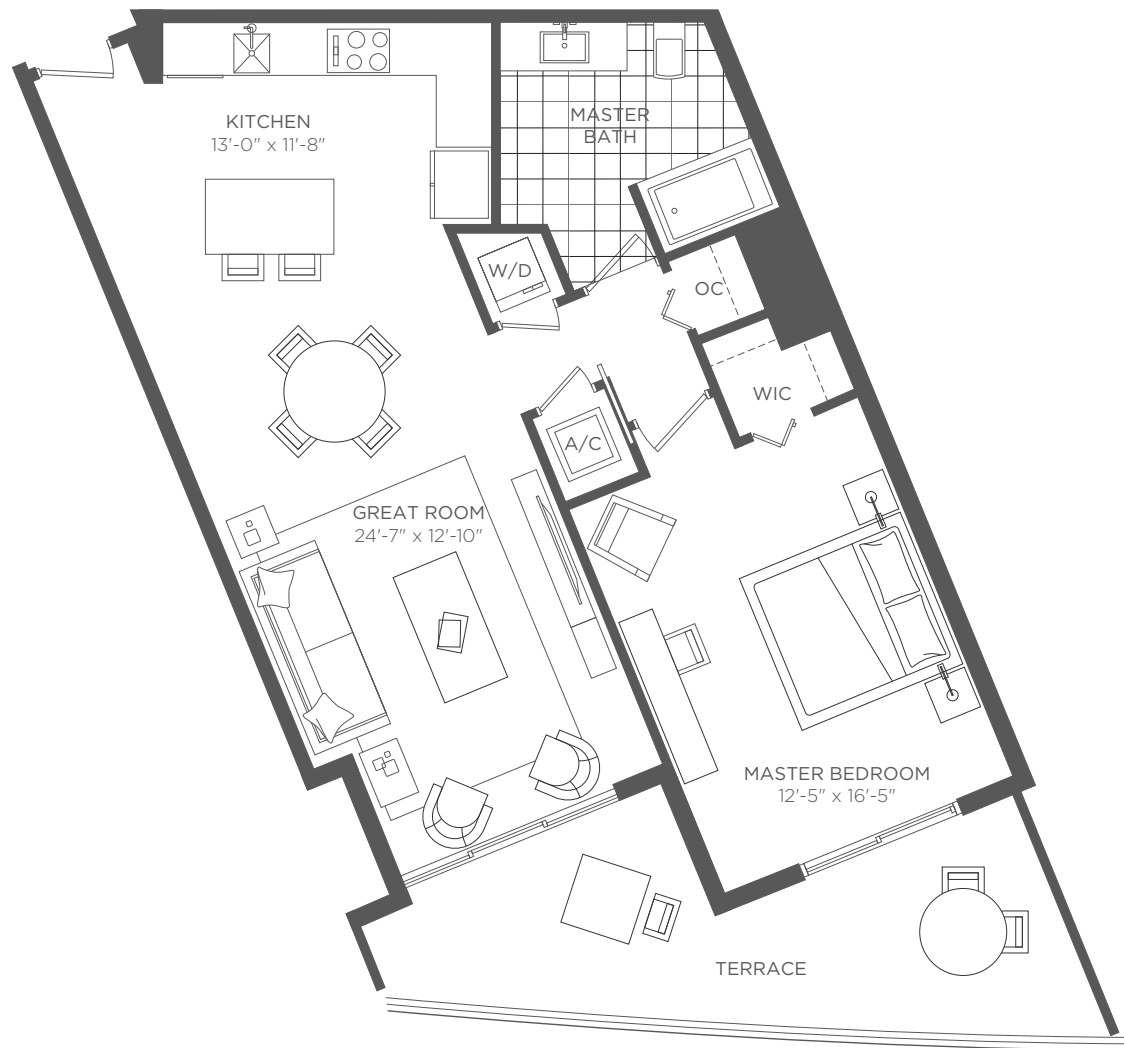
## RESIDENCE 08 2 BEDROOMS 2 BATHS

Interior 1,275 sq ft / 118.45 m<sup>2</sup> Terraces 315 sq ft / 29.26 m<sup>2</sup> Total 1,590 sq ft / 147.71 m<sup>2</sup>

 Stated dimensions are measured to the exterior boundaries of the exterior walls and the centerline of interior demising walls and in fact vary from the dimensions that would be determined by using the description and definition of the "Unit" set forth in the Declaration which generally only includes the interior airspace between the perimeter walls (measuring from interior wall plane to interior wall plane) and excludes interior structural components. For your reference, the square footage area of the Unit, determined in accordance with those Unit boundaries as defined in the Declaration (from interior wall plane to interior wall plane), is 1,179 sq.ft. Note that measurements of rooms set forth on this floor plan are generally taken at the greatest points of each given room (as if the room were a perfect rectangle), without regard for any cutouts. Accordingly, the area of the actual room will typically be smaller than the product obtained by multiplying the stated length times width. All dimensions are approximate and may vary with actual construction. All floor plans and development plans are subject to change without notice. The furnishings and décor depicted is not necessarily included with the purchase of your Unit and is shown for purposes of illustration only. Consult your prospectus and Purchase Agreement to determine what is included with your Unit purchase, if anything.



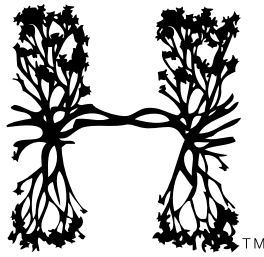
HYDE RESORT & RESIDENCES  
HOLLYWOOD FLORIDA



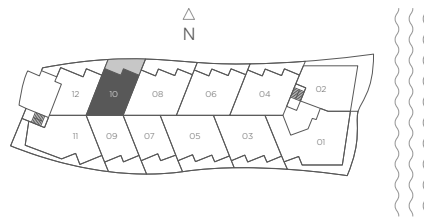
### RESIDENCE 09 1 BEDROOM 1 BATH

Interior 915 sq ft / 85.00 m<sup>2</sup> Terraces 208 sq ft / 19.32 m<sup>2</sup> Total 1,123 sq ft / 104.33 m<sup>2</sup>

Stated dimensions are measured to the exterior boundaries of the exterior walls and the centerline of interior demising walls and in fact vary from the dimensions that would be determined by using the description and definition of the "Unit" set forth in the Declaration which generally only includes the interior airspace between the perimeter walls (measuring from interior wall plane to interior wall plane) and excludes interior structural components. For your reference, the square footage area of the Unit, determined in accordance with those Unit boundaries as defined in the Declaration (from interior wall plane to interior wall plane), is 841 sq.ft. Note that measurements of rooms set forth on this floor plan are generally taken at the greatest points of each given room (as if the room were a perfect rectangle), without regard for any cutouts. Accordingly, the area of the actual room will typically be smaller than the product obtained by multiplying the stated length times width. All dimensions are approximate and may vary with actual construction. All floor plans and development plans are subject to change without notice. The furnishings and décor depicted is not necessarily included with the purchase of your Unit and is shown for purposes of illustration only. Consult your prospectus and Purchase Agreement to determine what is included with your Unit purchase, if anything.



HYDE RESORT & RESIDENCES  
HOLLYWOOD FLORIDA

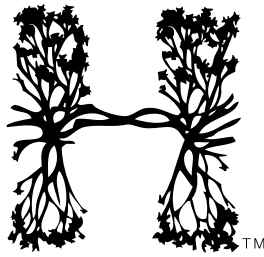


## RESIDENCE 10 1 BEDROOM 1 BATH

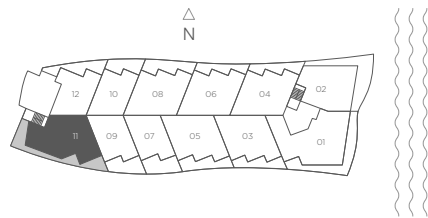
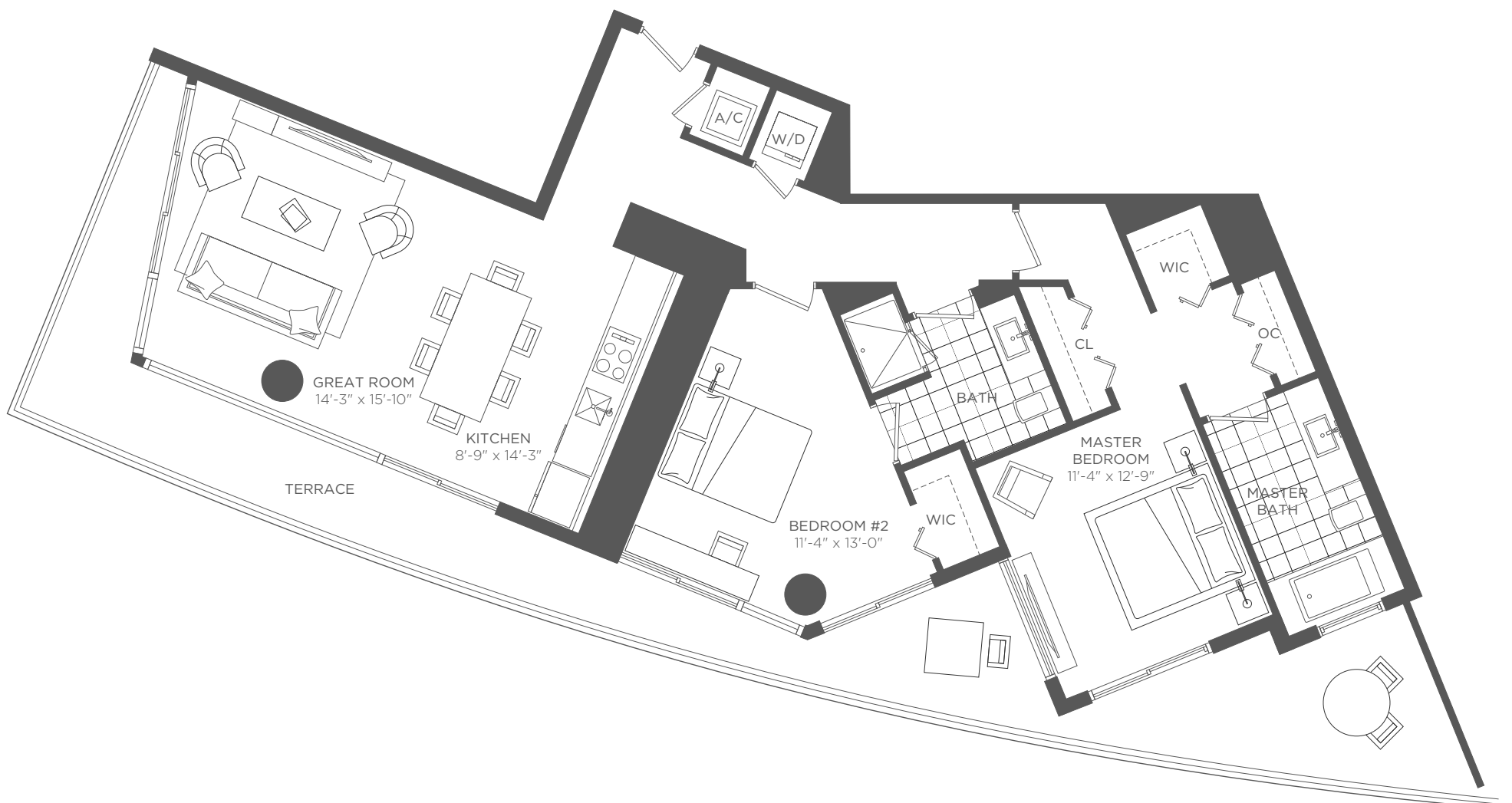
Interior 928 sq ft / 86.21 m<sup>2</sup> Terraces 210 sq ft / 19.50 m<sup>2</sup> Total 1,138 sq ft / 105.72 m<sup>2</sup>



Stated dimensions are measured to the exterior boundaries of the exterior walls and the centerline of interior demising walls and in fact vary from the dimensions that would be determined by using the description and definition of the "Unit" set forth in the Declaration which generally only includes the interior airspace between the perimeter walls (measuring from interior wall plane to interior wall plane) and excludes interior structural components. For your reference, the square footage area of the Unit, determined in accordance with those Unit boundaries as defined in the Declaration (from interior wall plane to interior wall plane), is 850 sq.ft. Note that measurements of rooms set forth on this floor plan are generally taken at the greatest points of each given room (as if the room were a perfect rectangle), without regard for any cutouts. Accordingly, the area of the actual room will typically be smaller than the product obtained by multiplying the stated length times width. All dimensions are approximate and may vary with actual construction. All floor plans and development plans are subject to change without notice. The furnishings and décor depicted is not necessarily included with the purchase of your Unit and is shown for purposes of illustration only. Consult your prospectus and Purchase Agreement to determine what is included with your Unit purchase, if anything.




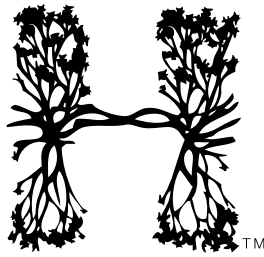
HYDE RESORT & RESIDENCES  
HOLLYWOOD FLORIDA



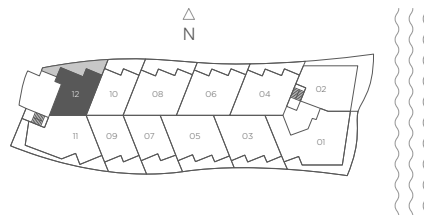
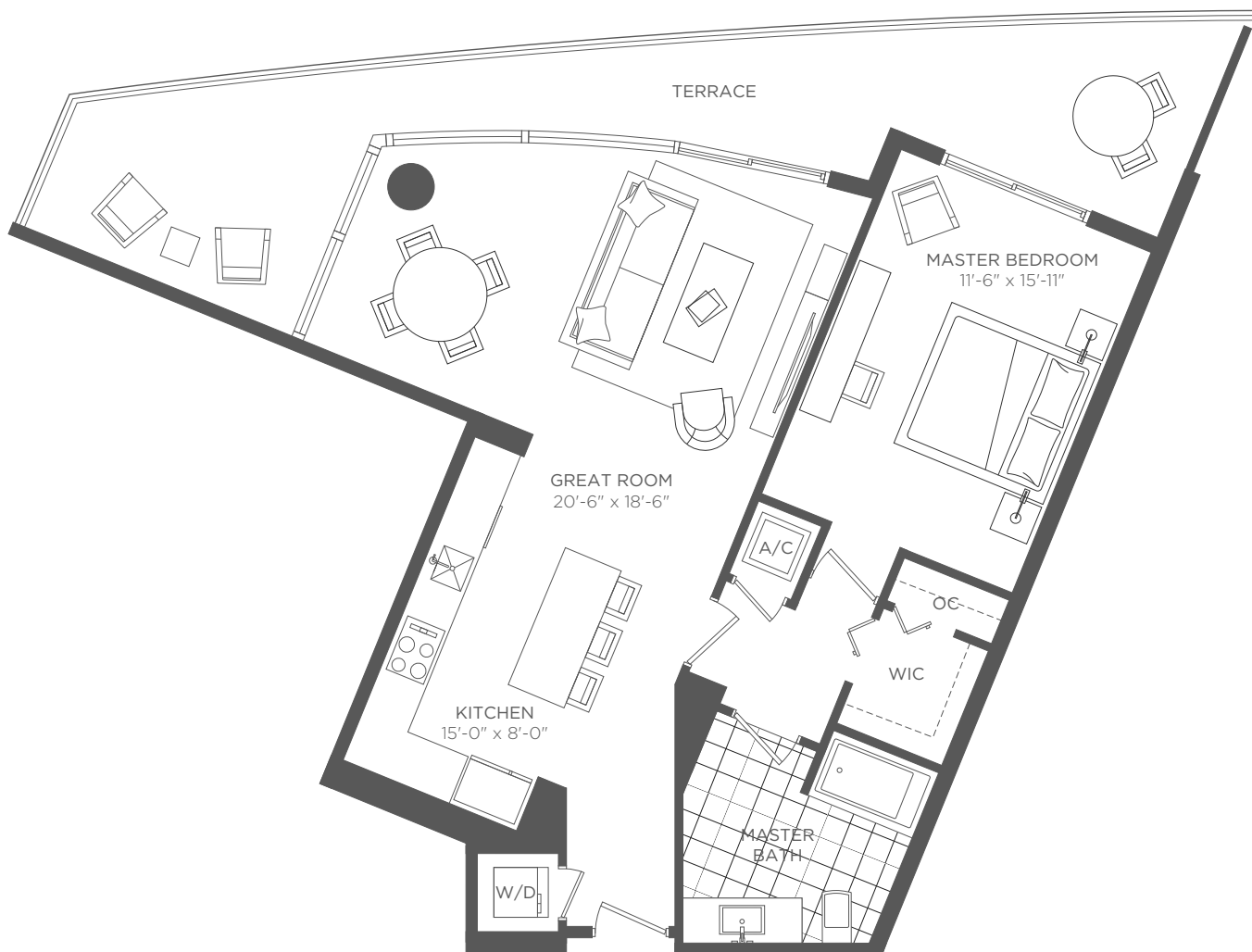
## RESIDENCE 11 2 BEDROOMS 2 BATHS

Interior 1,273 sq ft / 118.27 m<sup>2</sup> Terraces 510 sq ft / 47.38 m<sup>2</sup> Total 1,783 sq ft / 165.65 m<sup>2</sup>

 Stated dimensions are measured to the exterior boundaries of the exterior walls and the centerline of interior demising walls and in fact vary from the dimensions that would be determined by using the description and definition of the "Unit" set forth in the Declaration which generally only includes the interior airspace between the perimeter walls (measuring from interior wall plane to interior wall plane) and excludes interior structural components. For your reference, the square footage area of the Unit, determined in accordance with those Unit boundaries as defined in the Declaration (from interior wall plane to interior wall plane), is 1,087 sq.ft. Note that measurements of rooms set forth on this floor plan are generally taken at the greatest points of each given room (as if the room were a perfect rectangle), without regard for any cutouts. Accordingly, the area of the actual room will typically be smaller than the product obtained by multiplying the stated length times width. All dimensions are approximate and may vary with actual construction. All floor plans and development plans are subject to change without notice. The furnishings and décor depicted is not necessarily included with the purchase of your Unit and is shown for purposes of illustration only. Consult your prospectus and Purchase Agreement to determine what is included with your Unit purchase, if anything.




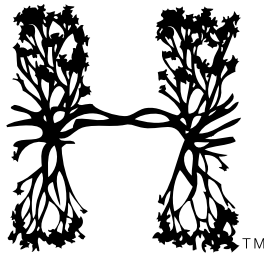
HYDE RESORT & RESIDENCES  
HOLLYWOOD FLORIDA



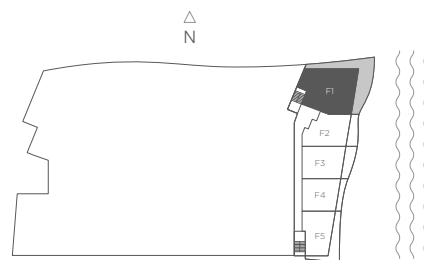
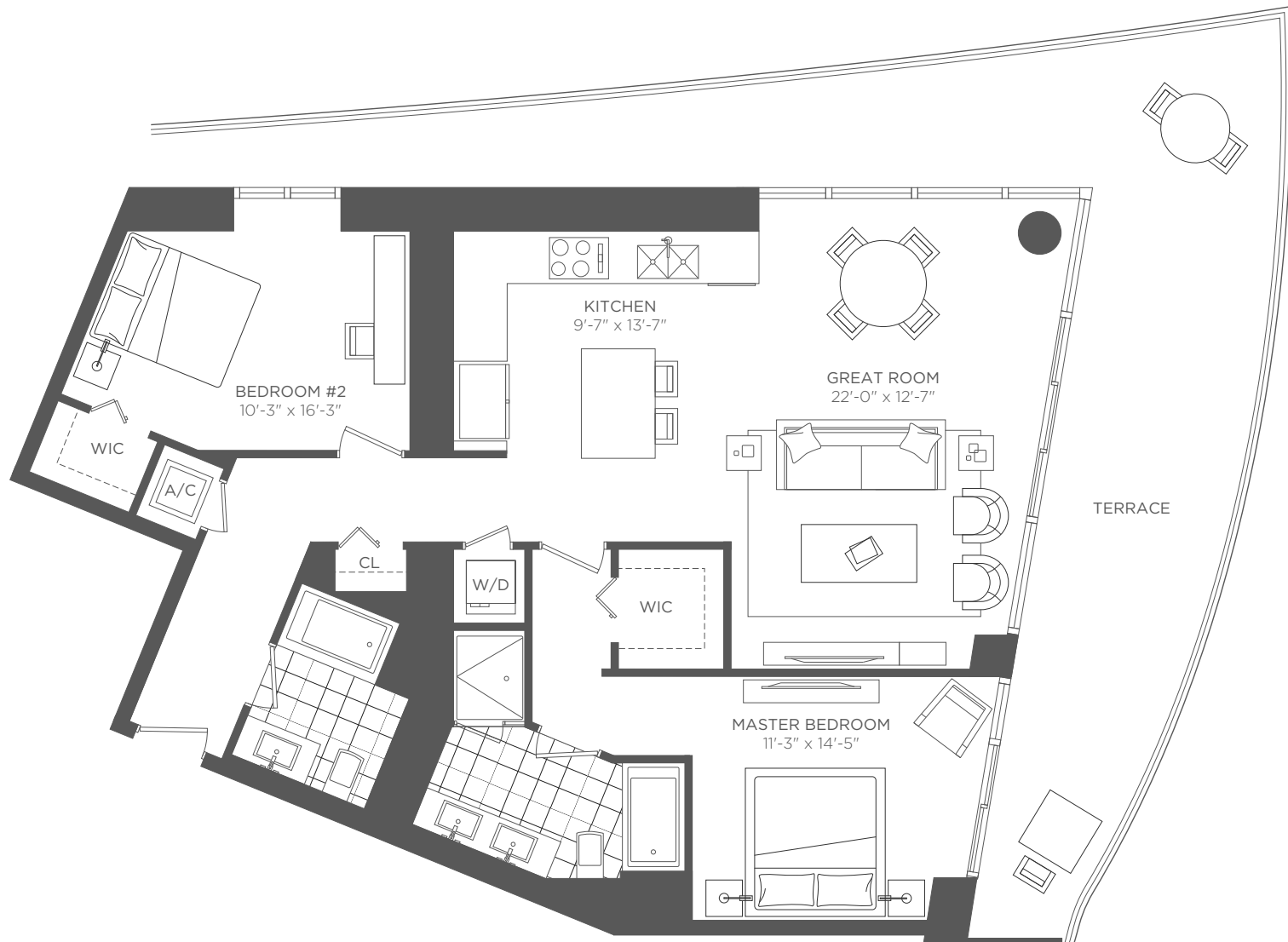
## RESIDENCE 12 1 BEDROOM 1 BATH

Interior 950 sq ft / 88.26 m<sup>2</sup> Terraces 340 sq ft / 31.59 m<sup>2</sup> Total 1,290 sq ft / 119.84 m<sup>2</sup>

 Stated dimensions are measured to the exterior boundaries of the exterior walls and the centerline of interior demising walls and in fact vary from the dimensions that would be determined by using the description and definition of the "Unit" set forth in the Declaration which generally only includes the interior airspace between the perimeter walls (measuring from interior wall plane to interior wall plane) and excludes interior structural components. For your reference, the square footage area of the Unit, determined in accordance with those Unit boundaries as defined in the Declaration (from interior wall plane to interior wall plane), is 869 sq.ft. Note that measurements of rooms set forth on this floor plan are generally taken at the greatest points of each given room (as if the room were a perfect rectangle), without regard for any cutouts. Accordingly, the area of the actual room will typically be smaller than the product obtained by multiplying the stated length times width. All dimensions are approximate and may vary with actual construction. All floor plans and development plans are subject to change without notice. The furnishings and décor depicted is not necessarily included with the purchase of your Unit and is shown for purposes of illustration only. Consult your prospectus and Purchase Agreement to determine what is included with your Unit purchase, if anything.



HYDE RESORT & RESIDENCES  
HOLLYWOOD FLORIDA



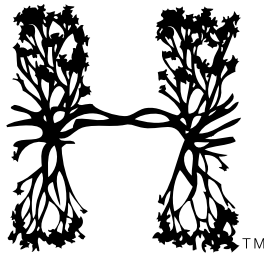
## RESIDENCE F1 2 BEDROOMS 2 BATHS

Interior 1,405 sq ft / 130.53 m<sup>2</sup> Terraces 598 sq ft / 55.56 m<sup>2</sup> Total 2,003 sq ft / 186.08 m<sup>2</sup>

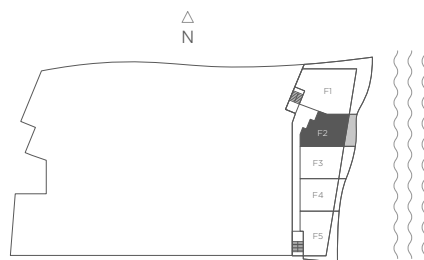
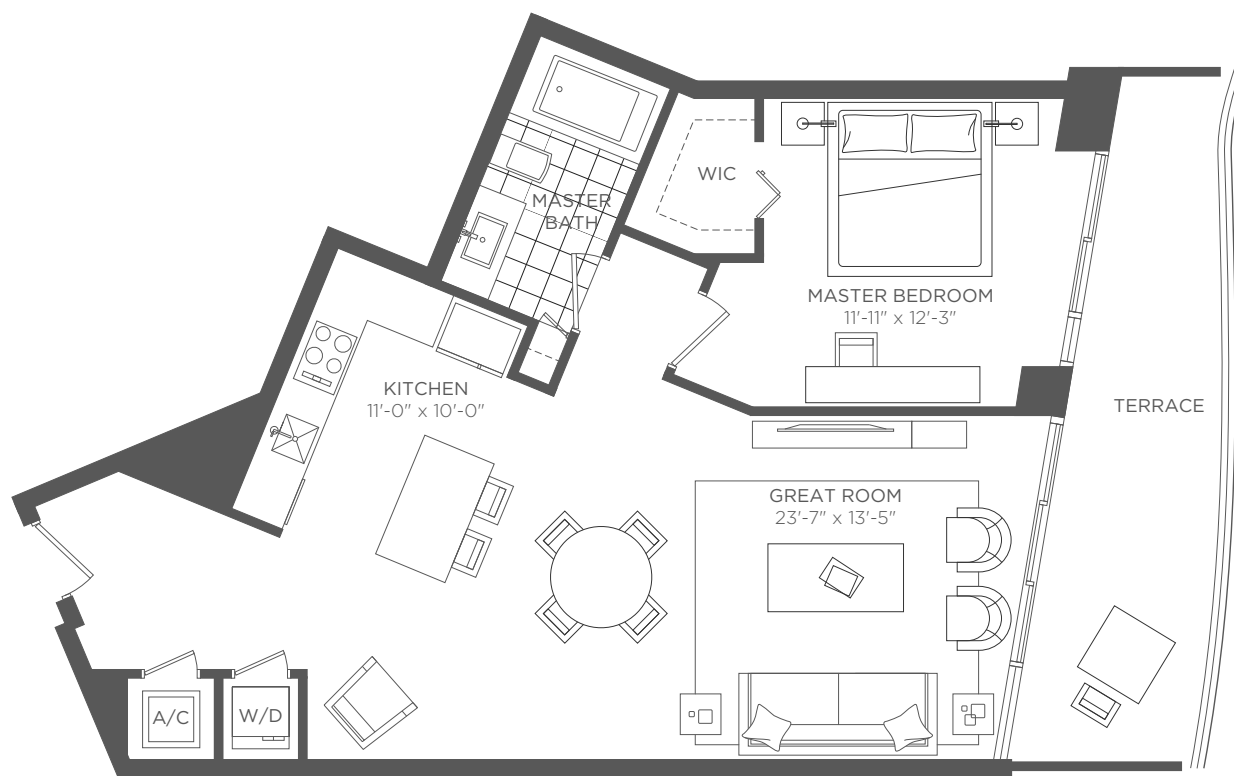


Stated dimensions are measured to the exterior boundaries of the exterior walls and the centerline of interior demising walls and in fact vary from the dimensions that would be determined by using the description and definition of the "Unit" set forth in the Declaration which generally only includes the interior airspace between the perimeter walls (measuring from interior wall plane to interior wall plane) and excludes interior structural components. For your reference, the square footage area of the Unit, determined in accordance with those Unit boundaries as defined in the Declaration (from interior wall plane to interior wall plane), is 1,172 sq.ft. Note that measurements of rooms set forth on this floor plan are generally taken at the greatest points of each given room (as if the room were a perfect rectangle), without regard for any cutouts. Accordingly, the area of the actual room will typically be smaller than the product obtained by multiplying the stated length times width. All dimensions are approximate and may vary with actual construction. All floor plans and development plans are subject to change without notice. The furnishings and décor depicted is not necessarily included with the purchase of your Unit and is shown for purposes of illustration only. Consult your prospectus and Purchase Agreement to determine what is included with your Unit purchase, if anything.






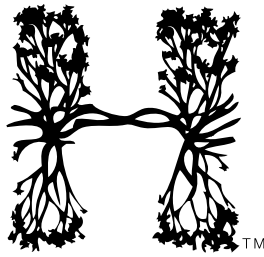
HYDE RESORT & RESIDENCES  
HOLLYWOOD FLORIDA



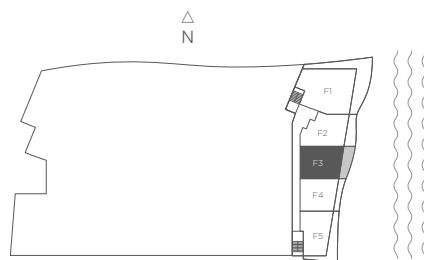
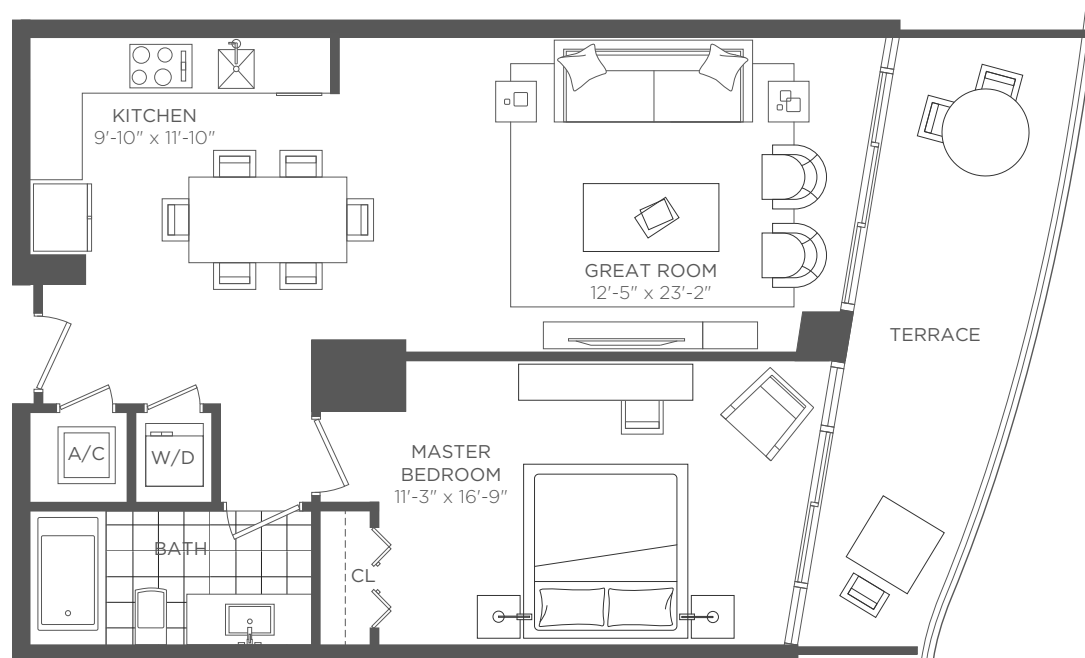
### RESIDENCE F2 1 BEDROOM 1 BATH

Interior 904 sq ft / 83.98 m<sup>2</sup> Terraces 175 sq ft / 16.26 m<sup>2</sup> Total 1,079 sq ft / 100.24 m<sup>2</sup>

 Stated dimensions are measured to the exterior boundaries of the exterior walls and the centerline of interior demising walls and in fact vary from the dimensions that would be determined by using the description and definition of the "Unit" set forth in the Declaration which generally only includes the interior airspace between the perimeter walls (measuring from interior wall plane to interior wall plane) and excludes interior structural components. For your reference, the square footage area of the Unit, determined in accordance with those Unit boundaries as defined in the Declaration (from interior wall plane to interior wall plane), is 802 sq.ft. Note that measurements of rooms set forth on this floor plan are generally taken at the greatest points of each given room (as if the room were a perfect rectangle), without regard for any cutouts. Accordingly, the area of the actual room will typically be smaller than the product obtained by multiplying the stated length times width. All dimensions are approximate and may vary with actual construction. All floor plans and development plans are subject to change without notice. The furnishings and décor depicted is not necessarily included with the purchase of your Unit and is shown for purposes of illustration only. Consult your prospectus and Purchase Agreement to determine what is included with your Unit purchase, if anything.




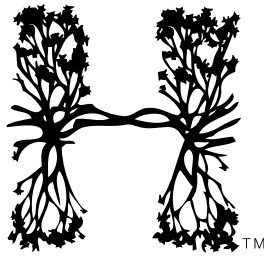
HYDE RESORT & RESIDENCES  
HOLLYWOOD FLORIDA



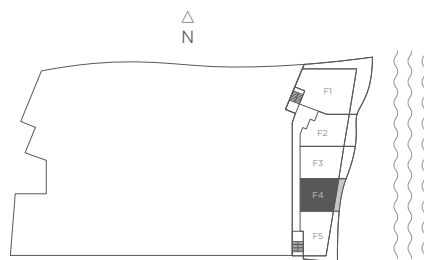
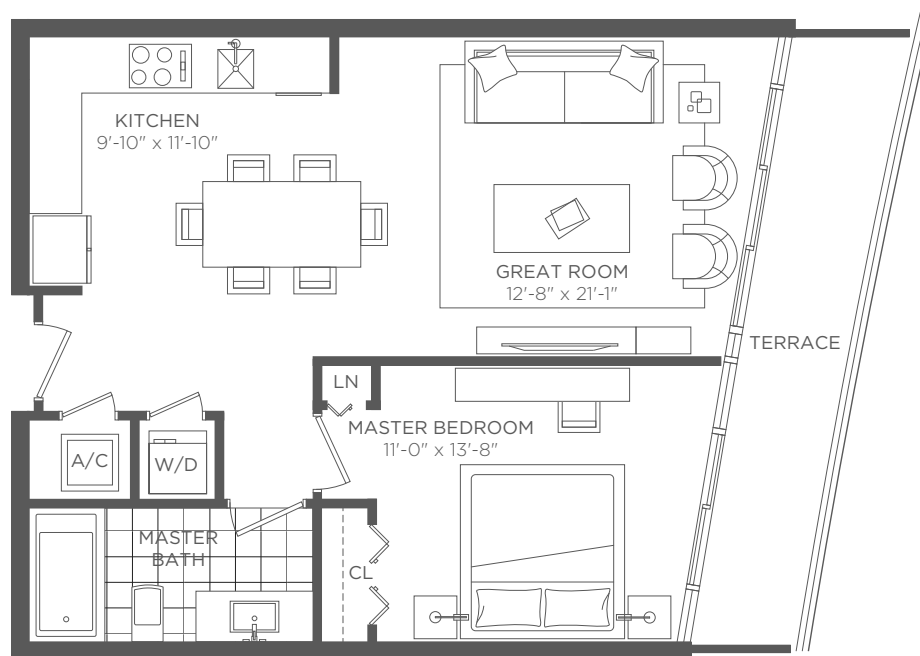
### RESIDENCE F3 1 BEDROOM 1 BATH

Interior 800 sq ft / 74.32 m<sup>2</sup> Terraces 175 sq ft / 16.26 m<sup>2</sup> Total 975 sq ft / 90.58 m<sup>2</sup>

 Stated dimensions are measured to the exterior boundaries of the exterior walls and the centerline of interior demising walls and in fact vary from the dimensions that would be determined by using the description and definition of the "Unit" set forth in the Declaration which generally only includes the interior airspace between the perimeter walls (measuring from interior wall plane to interior wall plane) and excludes interior structural components. For your reference, the square footage area of the Unit, determined in accordance with those Unit boundaries as defined in the Declaration (from interior wall plane to interior wall plane), is 759 sq.ft. Note that measurements of rooms set forth on this floor plan are generally taken at the greatest points of each given room (as if the room were a perfect rectangle), without regard for any cutouts. Accordingly, the area of the actual room will typically be smaller than the product obtained by multiplying the stated length times width. All dimensions are approximate and may vary with actual construction. All floor plans and development plans are subject to change without notice. The furnishings and décor depicted is not necessarily included with the purchase of your Unit and is shown for purposes of illustration only. Consult your prospectus and Purchase Agreement to determine what is included with your Unit purchase, if anything.



HYDE RESORT & RESIDENCES  
HOLLYWOOD FLORIDA

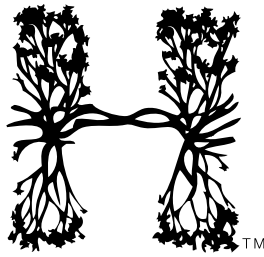


### RESIDENCE F4 1 BEDROOM 1 BATH

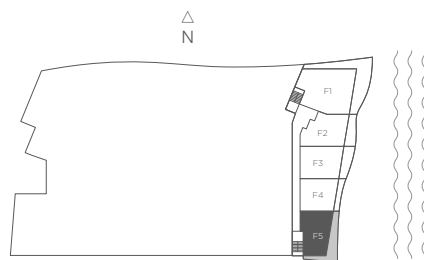
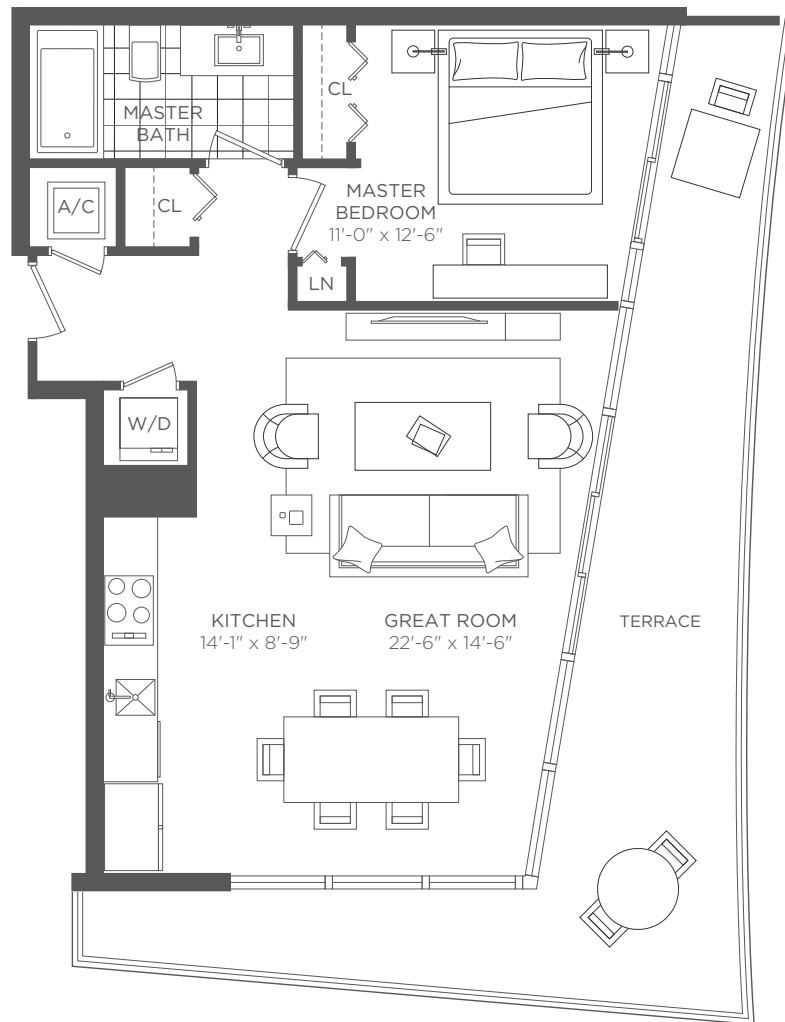
Interior 705 sq ft / 65.49 m<sup>2</sup> Terraces 121 sq ft / 11.24 m<sup>2</sup> Total 826 sq ft / 76.74 m<sup>2</sup>



Stated dimensions are measured to the exterior boundaries of the exterior walls and the centerline of interior demising walls and in fact vary from the dimensions that would be determined by using the description and definition of the "Unit" set forth in the Declaration which generally only includes the interior airspace between the perimeter walls (measuring from interior wall plane to interior wall plane) and excludes interior structural components. For your reference, the square footage area of the Unit, determined in accordance with those Unit boundaries as defined in the Declaration (from interior wall plane to interior wall plane), is 653 sq.ft. Note that measurements of rooms set forth on this floor plan are generally taken at the greatest points of each given room (as if the room were a perfect rectangle), without regard for any cutouts. Accordingly, the area of the actual room will typically be smaller than the product obtained by multiplying the stated length times width. All dimensions are approximate and may vary with actual construction. All floor plans and development plans are subject to change without notice. The furnishings and décor depicted is not necessarily included with the purchase of your Unit and is shown for purposes of illustration only. Consult your prospectus and Purchase Agreement to determine what is included with your Unit purchase, if anything.



HYDE RESORT & RESIDENCES  
HOLLYWOOD FLORIDA



### RESIDENCE F5 1 BEDROOM 1 BATH

Interior 760 sq ft / 70.61 m<sup>2</sup> Terraces 342 sq ft / 31.77 m<sup>2</sup> Total 1,102 sq ft / 102.38 m<sup>2</sup>

Stated dimensions are measured to the exterior boundaries of the exterior walls and the centerline of interior demising walls and in fact vary from the dimensions that would be determined by using the description and definition of the "Unit" set forth in the Declaration which generally only includes the interior airspace between the perimeter walls (measuring from interior wall plane to interior wall plane) and excludes interior structural components. For your reference, the square footage area of the Unit, determined in accordance with those Unit boundaries as defined in the Declaration (from interior wall plane to interior wall plane), is 701 sq.ft. Note that measurements of rooms set forth on this floor plan are generally taken at the greatest points of each given room (as if the room were a perfect rectangle), without regard for any cutouts. Accordingly, the area of the actual room will typically be smaller than the product obtained by multiplying the stated length times width. All dimensions are approximate and may vary with actual construction. All floor plans and development plans are subject to change without notice. The furnishings and décor depicted is not necessarily included with the purchase of your Unit and is shown for purposes of illustration only. Consult your prospectus and Purchase Agreement to determine what is included with your Unit purchase, if anything.